

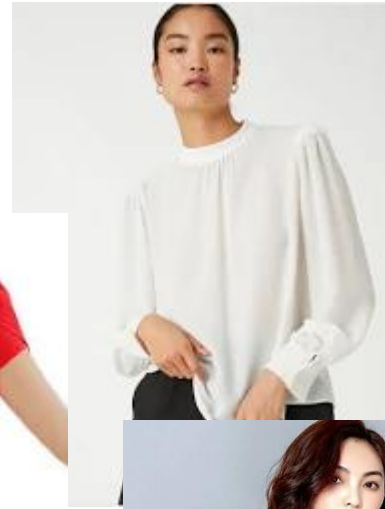
GEMS Wellington Academy Al Khail



Staff Dress Code

Underwear mustn't be visible under shirts/tops.

Ladies' options...



Cleavage covered



Capped sleeves must cover the **full** shoulder.

Ladies' options...

Trousers must be full length to the ankle.



Skirts and dresses must come below the knee when sitting.

Trousers, skirts and dresses must not be overly tight.

Ladies' Shoes

(must have a back or back strap)



These are too casual...



No backless shoes



No trainers



(No branding)



No beach shoes



No stilettos if you work in FS or Primary...



We don't want to stand on little fingers.

Menswear...



Chinos are fine as long as they aren't 'cuffed' or rolled at the bottom.



A tie must be worn.



Trousers and shirts must not be too tight.



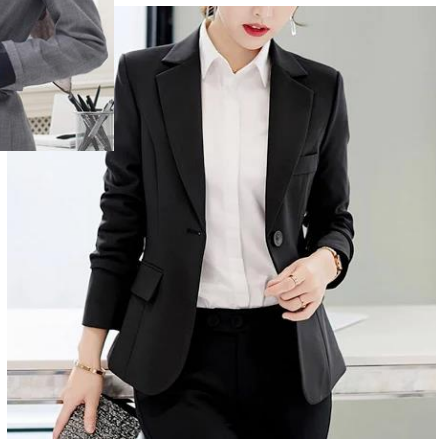
Mens' Shoes...



These are too casual...



Examples to keep you warm in the air con...



Suit jackets should be worn for formal school occasions.



National and cultural dress options...



These examples are too casual...



No denim, please.



No tight leggings, unless under a skirt/dress.



These are also too casual...



No t-shirts



No denim or sports wear



No t-shirts, no brand logos, no words/slogans on tops...

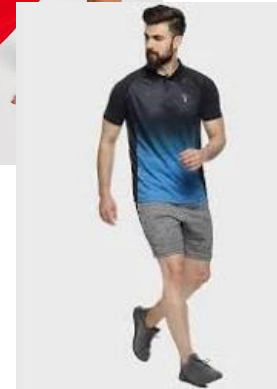
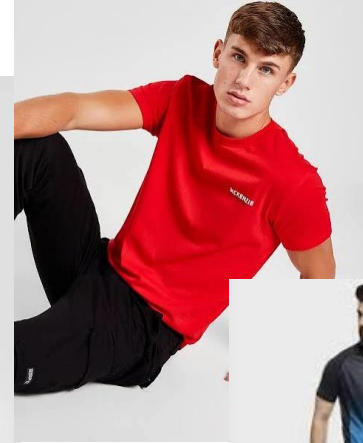


No hoods



For sports day or sport ECAs...

Ladies, if you wear tight leggings, please wear a t-shirt/top which fully covers your hips.



Branded logos (e.g. Nike ticks or Adidas stripes) **can** be worn on sports day or for sports ECAs.



WEK PE uniforms are also suitable for sports days and sporting ECAs.
For sporting ECAs, teachers must change after in-class duties.



No short shorts, unless they are staff uniform.