

THE ADVENTURE AWAITS!

Welcome to The Adventure Centre. This pack contains all the useful information that will be required for the upcoming 2022-2023 academic year as well as an over view of the company and our current and future activities.





CONTENTS

01 COMPANY OVERVIEW

02 OUR ETHOS & TOM CREAN

03 MEET THE TEAM

04 SITES & ACTIVITIES
HATTA | RAK

05 PRICE GUIDE &
THE BOOKING PROCESS

06 ROLES & EXPECTATIONS

07 WHAT TO EXPECT

08 CONTACT DETAILS



COMPANY OVERVIEW

The Adventure Centre has been operating in the UAE since 2016 as the leading outdoor education provider for quality and safety. Behind the scenes we work closely with technical advisors and safety companies to ensure we meet UK standards across the board from our equipment up keep to ratios and training.

During each tailored trip, we incorporate a framework of progression and self-sufficiency ensuring that each year when the students return to us, their schedule and activities are adapted to build on their previous knowledge to allow them to continue growing and developing not only themselves but also as a team.





OUR ETHOS

RESILIENCE | DETERMINATION | HUMILITY

While the students are on camp with us, we work these character traits into their everyday lives to better help create the leaders of tomorrow. We hold these values in high regard amongst our staff and allow them to be the role models for the students.

This ethos comes from an Irish man named Tom Crean. Tom Crean was part of an expedition led by Earnest Shackleton to the South Pole in which their ship became trapped in the ice. He disembarked and walked solo across 35 miles of the Antarctic ice shelf to reach help, and is held as the sole reason his shipmates were able to survive their expedition and return home safely. In doing so, he won the **Albert Medal** and displayed the above ethos throughout his life. This is a journey we discuss with the students before every trip to help set the mindset and expectation that anyone can achieve greatness. **All it takes is one step.**





HANNAH SHALOM DOYLE
Company Director



BRYAN DOYLE
Company Manager



REECE GAME
Operations Manager

OUR TEAM



LAUREN CRAVEN
Operations & Assistant
Media Manager



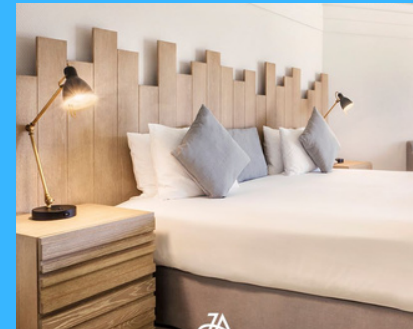
CLAIRE BERMUNDO
Videography & Media
Manager

We, at The Adventure Centre, found our element outside of the classroom through sports and have always pursued a career of creating that spark for children to get a taste of the outdoors.

The goal is to operate as a premium-tiered outdoor education provider where relationships built with our clients and customers are paramount.



FIND YOUR ELEMENT



THE MOUNTAIN EXPERIENCE

HATTA - THE JA HATTA FORT HOTEL



ACTIVITIES

FIND YOUR ELEMENT

LAND BASED ACTIVITIES

- ABSEILING
- ROCK CLIMBING
- NATURE HIKE
- TEAM BUILDING
- FIRST AID
- HUMAN FOOSBALL ARENA
- MAZE / NIGHTLINE
- ARCHERY
- AIR RIFLE SHOOTING
- WILDLIFE STUDIES / ANIMAL ENCOUNTER
- ORIENTEERING CHALLENGE
- SURVIVAL SKILLS
- MOUNTAIN BIKING
- BUGGY BUILD
- FISH GUTTING AND COOKING
- HALF DAY AT HATTA WADI HUB

WATER BASED ACTIVITIES

- SLIP AND SLIDE
- RAFT BUILDING
- SNORKEL HUNT
- POOL GAMES
- DROP-IN SLIDES
- KAYAKING

ACTIVITIES BEGINNING FROM 2023

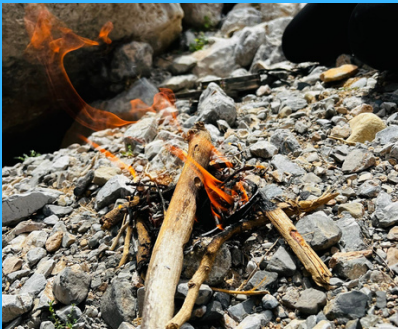
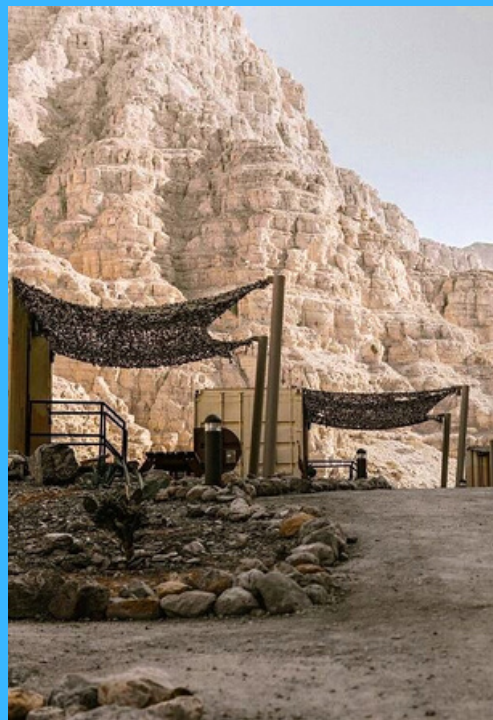
- JACOBS LADDER
- CRATE STACK
- AERIAL ASSAULT LADDER CLIMB
- LEAP OF FAITH
- GIANT SWING
- CLIMBING WALL
- ZIP LINE

EVENING EVENTS

- CAMPFIRE
- MOVIE NIGHT
- EGG DROP
- WHACKY RACES
- STAR GAZING & NAVIGATION
- RECREATION TIME



FIND YOUR ELEMENT



INTO THE WILD

RAK - BEAR GRYLLS EXPLORER CAMP



ACTIVITIES

FIND YOUR ELEMENT

LAND BASED ACTIVITIES

- JEBEL SLEDDER
- JEBEL JAIS ZIPLINE
- AERIAL ASSAULT COURSE
- ROCK CLIMBING
- ABSEILING
- BUGGY BUILD
- ARCHERY
- SURVIVAL SKILLS
- NATURE HIKE
- FIRST AID
- FRICTION BRIDGE
- CATAPULT BUILDING

EVENING EVENTS

- CAMP FIRE
- EGG DROP
- WHACKY RACES



PRICE GUIDE

A ONE NIGHT ☀️🌙☀️

950 AED

B TWO NIGHTS ☀️🌙☀️🌙☀️

1895 AED

C FOUR NIGHTS ☀️🌙☀️🌙☀️🌙☀️🌙☀️

2950 AED

Included in the booking cost are:

- Trained and qualified instructors
- Equipment and materials for all activities
- Transportation to and from school
- 3 buffet-style meals a day with juice and snacks
- Insurance for all participants
- Accommodation
- Student and parent presentations prior to the trip start
- Dedicated operations manager to liaise your trip.



THE BOOKING & TRIP PROCESS



01

BOOKING THE DATES

Once interest has been registered through one of the avenues listed at the bottom of this document you will be assigned an operations manager to book in dates for your trip and dates for a presentation for one of us to come to school to tell the students more about what they can expect on camp.

02

MEDICAL & CONSENT FORMS

4 weeks prior to the trip start date we will send a google form link to you to forward onto parents which is the medical declaration and consent form which we shall also share with yourself so you can track sign up numbers.

03

FINAL NUMBERS

7 days prior to the trip start date the booking form is closed. 5 days prior to trip start date we require rooming lists. Rooms can take up to 4 students.

04

THE DAY

On the morning of the trip our staff will meet you at the school with our busses and check them over to ensure they are suitable as well as be able to answer any questions from parents before escorting the bus to the residential location. On the first day is when TAC will issue an invoice to the school with the exact amount of students attending.

ROLES & EXPECTATIONS

OPERATIONS MANAGERS

On every trip we run, we have at least one operations manager (Reece or Lauren) as well as suitably qualified or trained and assessed instructors to run the activities in a safe and professional manner with a ratio of 1:12 for land activities and 1:8 with water activities.

The role of the operations manager is to oversee the safe and effective running of the trip and will be the port of call for questions or concerns as they have extensive knowledge of not only the companies policies but all the activities and logistics and are well versed in handling situations that may arise.

MEDIA MANAGERS

There will always be a media person on-site to make sure that the parents/guardians are well updated with the happenings at camp where they can check through our social media channels such as Facebook and Instagram.

INSTRUCTORS

The role of our instructors is to impart their skills and knowledge to the students in a variety of ways and methods to ensure end learning objectives are met whilst having the element of fun and enjoyment. From pick up in the morning where travel down to the school and accompany the students on the busses until the moment they leave on their final day we will be there with them. The instructors monitor all break times and meal times as well as instruct on the evening activities. At 8pm, the role of responsibility and pastoral care will be taken over by the attending teachers. We always have one member of staff stay overnight who is on 'Duty' that is there to help with problems that may arise that require assistance such as first aid or an ill child that requires a hospital trip or returning home via their parents.



ROLES & EXPECTATIONS



BEHAVIOR AND DISCIPLINE

The Adventure Centre staff have a protocol to abide by to ensure a fair process is implemented throughout the trip. If a student displays unacceptable behavior or reoccurring behavior that is affecting others, the first port of call is the teacher. That will be done by radio message to the operations manager who will then locate a teacher and take them to the student to handle the behavior as we understand that there may already be school rules and processes in place that must be followed. The only exception to this is if a student becomes a danger to themselves, the group, or the instructor. At this point the session will stop, the operations manager will be called and available teachers will meet where the student is, where they then will be removed from that session. A report will be written on the incident at which point the operations manager will confer with the teachers as to a plan of action if the student may rejoin the rest of their sessions, be placed in another group, or as a last resort, the removal of the student from the site by notifying the student's parents or guardian. This decision is not taken lightly and is an absolute last resort. The final decision lies with the operations manager.

TEACHERS' ROLE & RESPONSIBILITY

While on camp we ask that the teachers are available if needed for situations such as the outlined above. Our staffs are supervising the students from waking up until 8 in the evening so if the teachers have work to do or wish to walk round the sessions, they are free to do so. That being said, the students do benefit greatly from seeing their teacher being involved in activities and showing their fun side and this will also allow for building that rapport. At 8pm, the responsibility is then transferred back to the school staff to supervise until the following morning when TAC staffs return. As above, there will always be a member of TAC on site that is there to help if needed.

WHAT TO EXPECT



Day 1 -21st												
	TRAVEL			Lunch	Session1	Snack & AC	Session 3	Refresh Time	Dinner	Evening Ents	Refresh Time	Lights Out
	7.30am-8.30am	8.30am-10am	10am-11.30am	12pm-13.00pm	13.00pm-1430pm	14.30pm-15.30pm	15.30pm-17.00pm	17.00pm-18.00pm	18.00pm-19.00pm	19.00pm-20.00pm	20.00pm-21.00pm	21.00pm
Red	Pick up	TRAVEL TO HATTA	Tour and Games	Lunch	Raft Build	Snack	Pool Games	ROOMING	Dinner	Campfire	Rooms	Lights Out
Purple		TRAVEL TO HATTA	Tour and Games		Pool Games		Raft Build					
Orange		TRAVEL TO HATTA	Tour and Games		Archery		Drop In Slide					
Black		TRAVEL TO HATTA	Tour and Games		Drop In Slide		Archery					
Day 2 - 22nd												
	Breakfast	Session 1	Session 2	Lunch	Session 3	15.00pm-15.30pm	Session 3	Refresh Time	Dinner	Evening Ents	Refresh Time	Lights Out
	07.30am-08.30am	8.30am-10am	10am-11.30am	12pm-13.30pm	13.30pm-15.00pm	Snack	15.30pm-17.00pm	17.00pm-18.00pm	18.00pm-18.45pm	18.45pm-20.00pm	20.00pm-21.00pm	21.00pm
Red	Breakfast	Abseil	Wildlife	Lunch and Marshmallow Tower	Archery		Drop In Slide	Rooms	Dinner	Movie Under the stars	Refresh Time	Lights Out
Purple		Wildlife	Abseil		Drop In Slide		Archery					
Orange		Slip and Slide	Team Challenge		Raft Build		Pool Games					
Black		Team Challenge	Slip and Slide		Pool Games	Raft Build						
Day 3 - 23rd												
	Breakfast	Session 1	Session 2	Session 3	Session 4		 THE ADVENTURE CENTRE Find Your Element					
	7.00am-8.00am	8.00am-9:30am	9:30am-11am	11am-12pm	12pm							
Red	Breakfast	Slip and Slide	Team Challenge	Tree Planting & Conservation	Packed lunch and departure							
Purple		Team Challenge	Slip and Slide									
Orange		Abseil	Wildlife									
Black		Wildlife	Abseil									

The above is a representation of a Year 5 trip to our Hatta site. The morning begins at the school where our instructors will meet the students and teachers. We do a safety check of the bus and are also on hand to help load students and bags as well as meet and greet parents if they have any questions or information they need to impart to us. We depart the school at 08:30 am to get to Hatta at 10:00 am where there will be a welcome talk given to go through what they can expect and how to get the most out of the trip. They will also be then split down into teams of no more than 12 and assigned an instructor for a site tour and some games before lunch.

On their last day at camp, students need to pack their bags and clear the rooms to make sure none of their things will be forgotten before heading up for breakfast and activities. At the end of their last activity, they will head over to our tree planting garden where there will be a small talk about the future of the environment, and a selected few students will plant a tree as a representation that their school went to camp and that their deeds are their monuments. After doing so, it's time to collect lunch, board the busses and depart back to school.



HANNAH SHALOM DOYLE

hannah@theadventurecentre.ae

+971 56 142 1819

REECE GAME

reece@theadventurecentre.ae

+971 50 794 0026

CLAIRE BERMUNDO

claire@theadventurecentre.ae

+971 52 286 7787

BRYAN DOYLE

bryan@theadventurecentre.ae

+971 56 538 4467

LAUREN CRAVEN

lauren@theadventurecentre.ae

+971 50 965 8750

CONTACT US