



# The Early Years Centre Nursery Risk Assessment Policy

2022 - 23

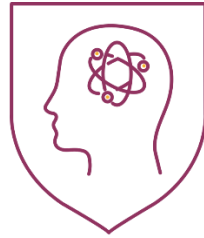
**Date last reviewed** | August 2022

**Review period** | Annually

**Lead Reviewer(s)** | Nursery Manager



***“Empowering students to aspire, create and excel in the world that is, so they can help create the world that will be”***



The Science of Learning



Social Enterprise



Student Agency and Innovation

## 1. Introduction

At The Early Years Centre Nursery, we create a safe and secure environment where risk assessments are carried out daily and on a regular basis. Highest priority is given to the safety and health and wellbeing of the children and all possible risks must be assessed and eliminated.

## 2. Aims and Objectives

- To provide information to parents and staff of the risk assessment policy and procedure
- To ensure that all children are kept safe and secure at all times, and the environment meets all health and safety standards

## 3. Methods

- The Nursery Manager will check all communal areas every morning prior to children arriving.
- Classroom teachers will be responsible for checking classrooms and reporting any issues to the Manager
- A thorough Risk Assessment will be carried out for the complete indoor and outdoor premises at the beginning of each term by the Nursery Manager and Manager of School Operations.
- The Manager of School Operations will ensure compliance with all requirements by Dubai Municipality, MOE and the DHA.
- Additional risk assessments will be carried out where individual children pose risks (e.g. due to current needs) or where extra-curricular activities present additional risks outside of typical daily routines.
- Children will be encouraged to be able to identify risks and keep themselves safe.